

PROJECT: 33879.2.81

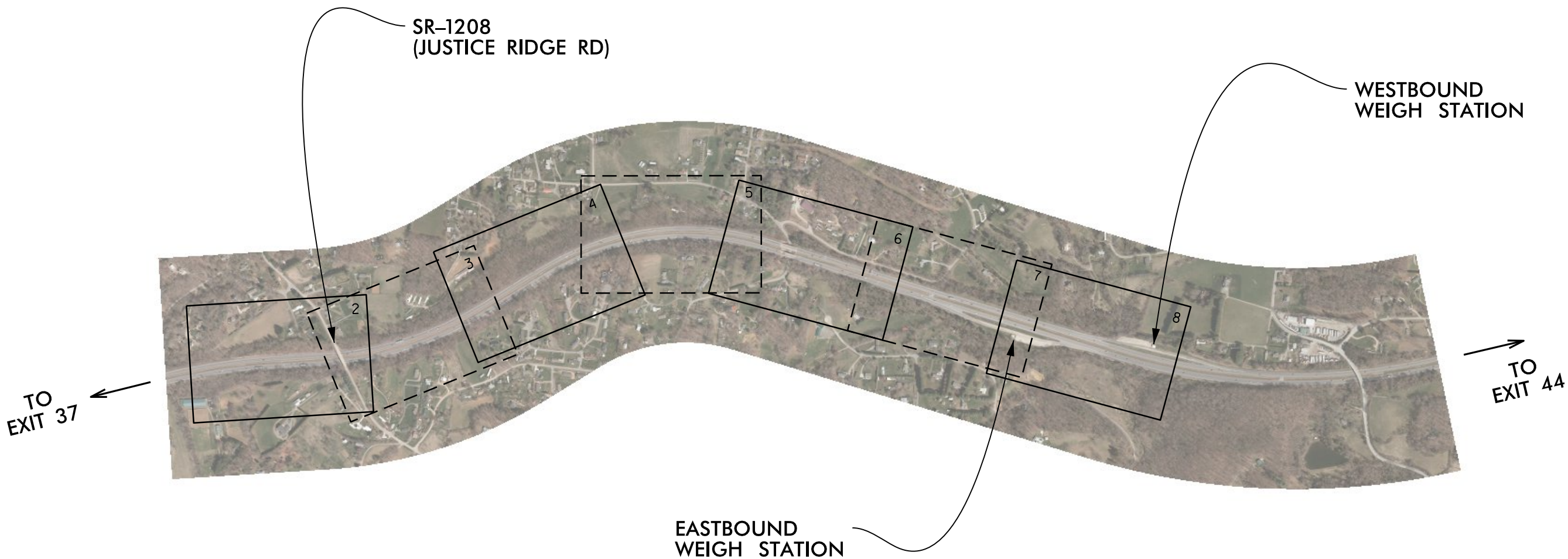
CONTRACT: 11901232

STATE OF NORTH CAROLINA
DIVISION OF HIGHWAYS

BUNCOMBE COUNTY

LOCATION: 400' WEST OF SR-1208 (JUSTICE RIDGE RD) 1.6 MILES
TO WESTBOUND WEIGH STATION
TYPE OF WORK: I-40 EASTBOUND WEIGH STATION UPGRADE

STATE	STATE PROJECT REFERENCE NO.	SHEET NO.	TOTAL SHEETS
N.C.	33879.2.81	1	8
STATE PROJ. NO.	F.A. PROJ. NO.	DESCRIPTION	
33879.2.81	N/A	CONST	



Prepared in the Office of:
NCDOT DIVISION 13
55 Orange St., Asheville NC, 28801

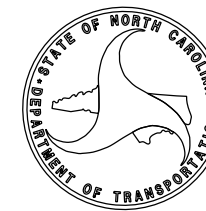
2018 STANDARD SPECIFICATIONS

RIGHT OF WAY DATE:

LETTING DATE:
JUNE 19, 2019

PROJECT ENGINEER

PROJECT DESIGN ENGINEER





SR-1208 (JUSTICE RIDGE RD) POT =
EB I-40 POT Sta. 10+00

10+00 EB I-40

MATCH LINE STA 11+50 SEE SHEET 3



PROPOSED SIGN #101
(SEE SHEET SIGN-04)

NOTE: ALIGNMENT AND STATIONING IS FOR
REFERENCE PURPOSES ONLY.



EXISTING SIGN
WEIGH STATION
1 MILE

REMOVE EXISTING SIGN
ALL TRUCKS NEXT RIGHT
(SEE SHEET SIGN-04)

NOTE: ALIGNMENT AND STATIONING IS FOR
REFERENCE PURPOSES ONLY.

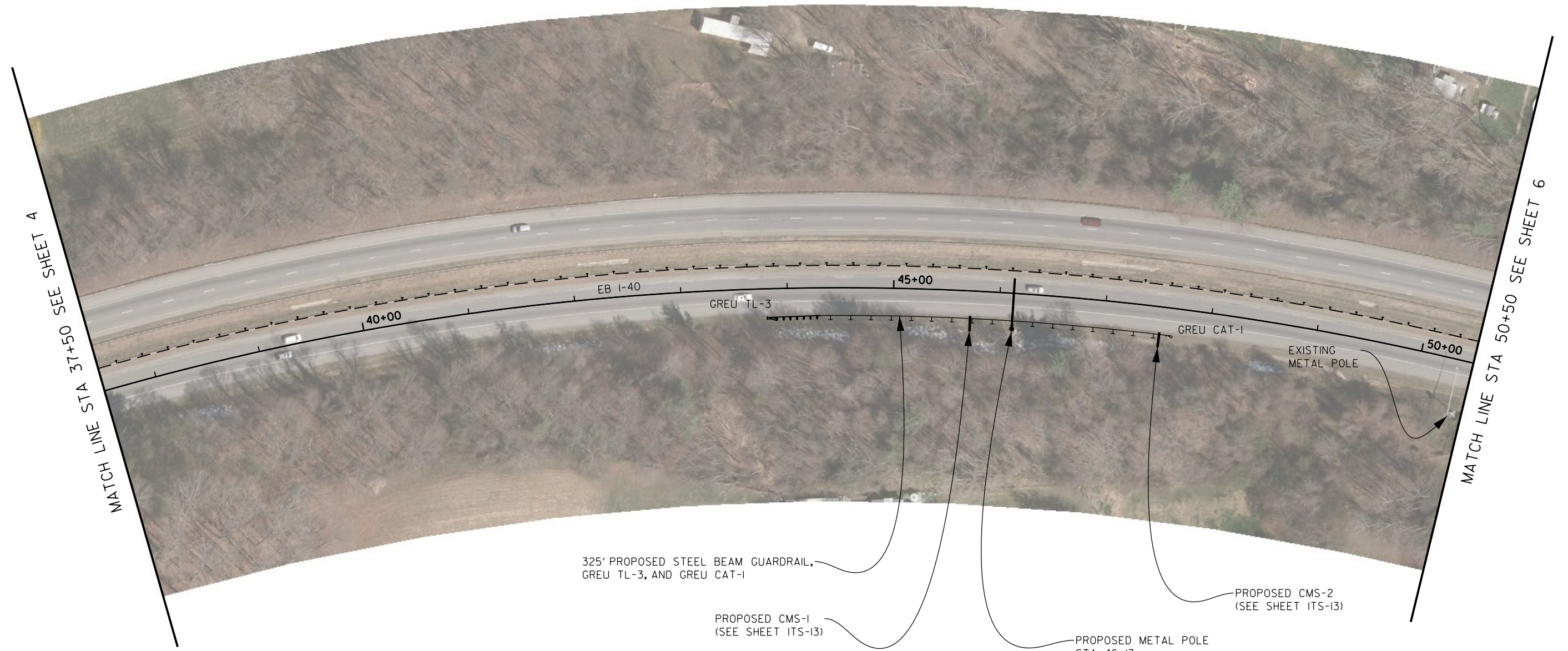


MATCH LINE STA 24+50 SEE SHEET 3

MATCH LINE STA 37+50 SEE SHEET 5

PROPOSED METAL POLE STA 26+63
320' FROM EXISTING SIGN
ALL TRUCKS NEXT RIGHT
(SEE SHEET ITS-5)

NOTE: ALIGNMENT AND STATIONING IS FOR REFERENCE PURPOSES ONLY.



325' PROPOSED STEEL BEAM GUARDRAIL,
GREU TL-3, AND GREU CAT-1

PROPOSED CMS-1
(SEE SHEET ITS-13)

PROPOSED METAL POLE
STA 46+13
(SEE SHEET ITS-6)

PROPOSED CMS-2
(SEE SHEET ITS-13)

EXISTING METAL POLE

NOTE: ALIGNMENT AND STATIONING IS FOR
REFERENCE PURPOSES ONLY.



MATCH LINE STA 50+50 SEE SHEET 5



MATCH LINE STA 64+00 SEE SHEET 7

EXISTING SIGN
WEIGH STATION NEXT RIGHT

NOTE: ALIGNMENT AND STATIONING IS FOR REFERENCE PURPOSES ONLY.



MATCH LINE STA 64+00 SEE SHEET 6



MATCH LINE STA 77+50 SEE SHEET 8



MATCH LINE STA 77+50 SEE SHEET 7



NOTE: ALIGNMENT AND STATIONING IS FOR REFERENCE PURPOSES ONLY.